

# TALK TO YOUR DOCTOR ABOUT

---



FOR THE TREATMENT OF  
CHRONIC PANCREATITIS  
AFTER TOTAL  
PANCREATECTOMY



## PERSONALIZED CELL THERAPY FOR CHRONIC PANCREATITIS

For a growing number of patients suffering from chronic pancreatitis, pancreatectomy (removal of the pancreas) with islet auto-transplantation (TP-IAT) can provide significant pain relief with long-term glycemic control. TP-IAT with Kyslecel™ is available for children and adults in the United States. It is covered by all major commercial health insurers (including Medicare supplement plans), many state Medicaid carriers, and Veteran's Affairs.

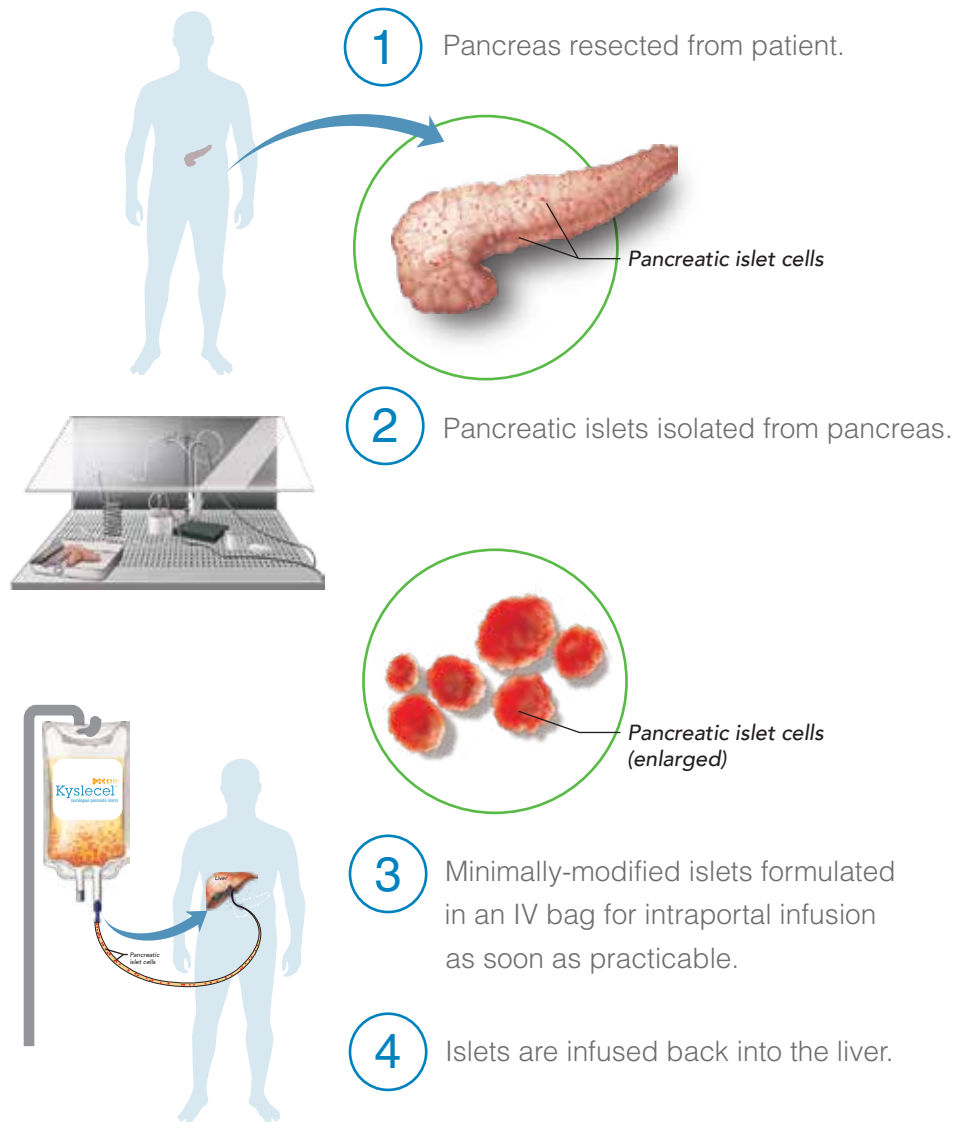
Most patients with chronic pancreatitis (nearly 80%) will eventually develop diabetes as the disease progresses and the pancreas degenerates. TP-IAT with Kyslecel may be considered earlier in the course of the disease to preserve islet function before becoming diabetic.

Not every patient who undergoes TP-IAT with Kyslecel will achieve blood sugar control and some patients may require life-long insulin therapy. All patients will require lifelong enzyme replacement therapy. TP-IAT is a major surgery and carries significant risks. You should speak to your doctor about the potential benefits and risks associated with TP-IAT and Kyslecel.



# HOW Kyslecel™ THERAPY WORKS

(autologous pancreatic islets)



## WHO IS ELIGIBLE FOR KYSLECEL? WHERE CAN IT BE PERFORMED?

Kyslecel is intended for children and adults with chronic pain due to chronic pancreatitis and whose islets produce insulin. Generally, eligibility for TP-IAT is determined by abdominal pain longer than six months, severely impaired quality of life, repeated hospitalizations, and a consistent need for narcotic pain medication.

Your health provider may be able to perform TP-IAT with Kyslecel if they have the requisite surgical and endocrinology capabilities. Some doctors may prefer to refer you to a specialized surgical center. Your doctor can contact Koligo Therapeutics to discuss the options.